



1960

2	7	"	"
5	"	"	/ 12
		16	
	155	2	
1	,	1	6
6		3	2
		2	6
17		10	3
2		2	6 9
8			1
2		17	3
9		3	1
		1	1
	2		1
	1		1
10			292

2017 7 "

			2018
		1	
	2	2	1
1		1	2
2		1	11
4		3	1
3		12	13
1	16	35	28 12
	49	6	146
5		945	114
438		27	"

" 2017
"
" 2014
" 2017
" 2018
" 90
" - "
30
" " "
" " "
" " "
" " "
" " "

1

2

3

4

5

6

7

" "

15000

15%

1

2

2012

2019 8 27
 5 16 1 5 4 , 1
 19 8

1

		100501K		5		
		100512TK		5		
		100601K		5		
		100502K		5		
		100510TK		5		
		100511TK		5		
		101005		4		
		100508TK		5		
		100801		4		
		100802		4		
		100806T		4		
		082701		4		
		082702		4		

		081302		4		
		100701		4		
		100702		4		



2740

100.32%

95.84%

3

		209	72	0	480	435	0	62.56	68.85	--
		30	36	0	560	535	0	39.31	45.47	--
	A	376	1,043	0	480	435	0	68	72	--
	A	7	17	0	458	435	0	84.53	86.4	--
	A	5	6	0	504	426	0	43.74	65.07	--
	A	3	5	0	400	366	0	130.45	116.11	--
	A	2	4	0	455	390	0	94.49	89	--

	A	3	3	0	444	376	0	47.43	14.73	--
	A	10	8	0	503	443	0	37.42	85.11	--
	A	7	11	0	481	432	0	51.67	56.78	--
	A	2	4	0	400	363	0	121.61	104.6	--
	A	7	19	0	472	459	0	72.97	89.74	--
	A	1	3	0	428	400	0	93.11	80.11	--

" "

1082 , 658

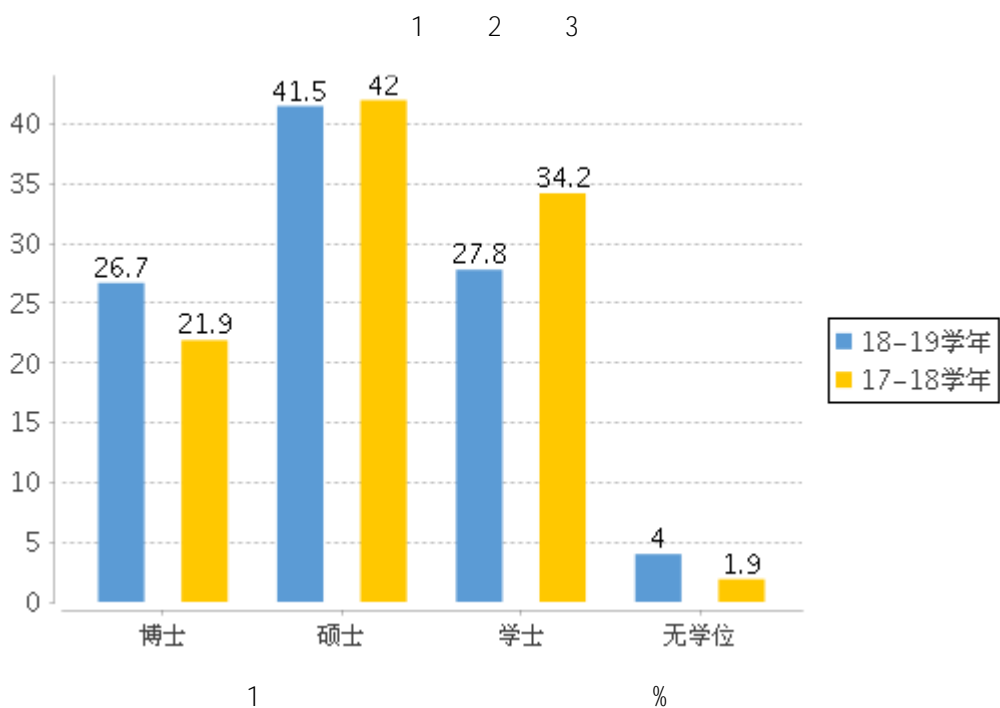
3

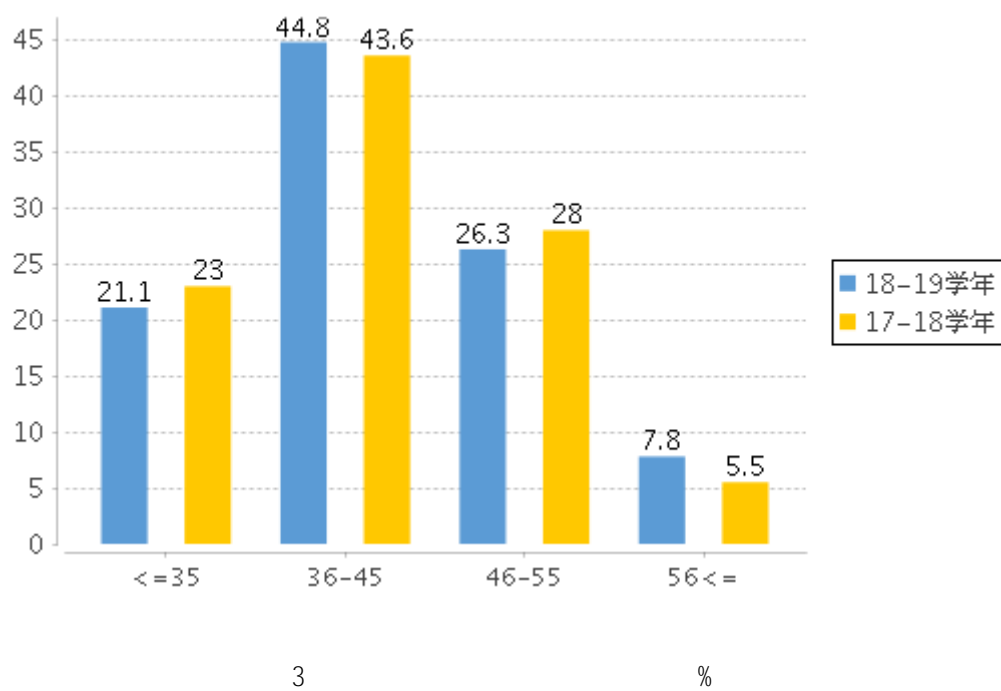
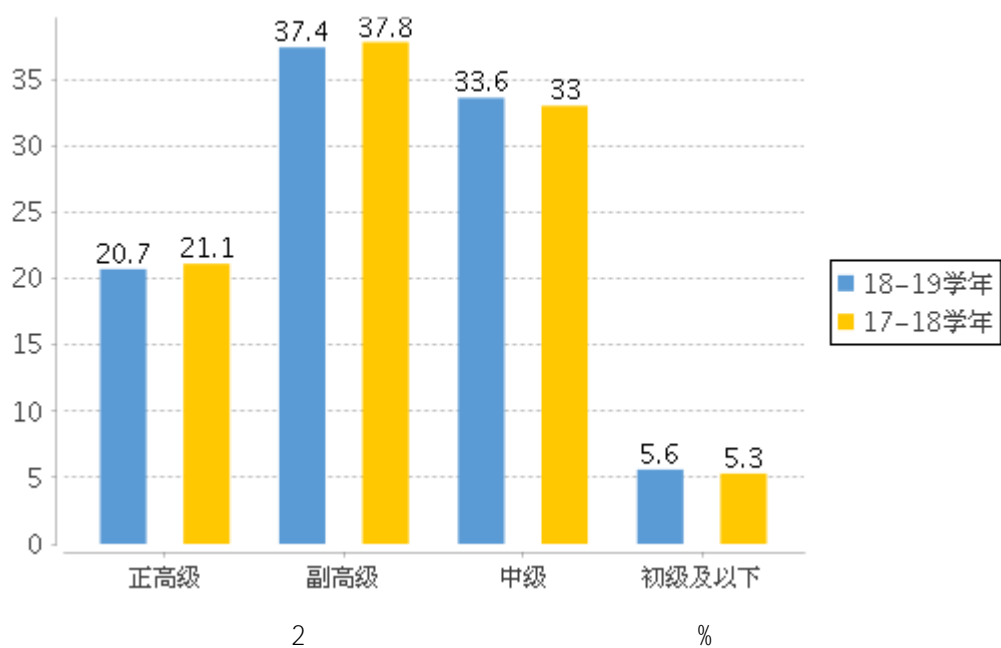
	658	296	982.55
	622	282	939.17

4

		%	%
	658	/	296
	136	20.67	58
	49	7.45	5

			%		%
		246	37.39	111	37.5
		140	21.28	4	1.35
		221	33.59	96	32.43
		127	19.3	10	3.38
		44	6.69	27	9.12
		18	2.74	4	1.35
		11	1.67	4	1.35
		176	26.75	68	22.97
		273	41.49	82	27.7
		183	27.81	89	30.07
		26	3.95	57	19.26
	35	139	21.12	59	19.93
	36-45	295	44.83	103	34.8
	46-55	173	26.29	108	36.49
	56	51	7.75	26	8.78





658
14896.2

296
15.16

982.55

			487	71.83%
	1,244			
170		25.07%	338	15.95%
			125	18.44%
257		12.13%		
			422	62.24%
	1,020			
379		55.9%	900	42.47%

			68
	72		94.44%

			2018
	3,121.21		421.13
244.79			3021.79
			407.72
		236.99	

	2019		75.483	66.565
		12.305		34.233
			+	
155,633.29		28,020.24		69,080.65
	4,265		35,830.6	

4	3	1	
3	12	13	1

2018 12

3

" "

60

60

60

2018 9

7000

2019 1

4198

2019 7

2678

" "

2018-2019

" "

" "

" " " "

" " " " "

2019 3

[2019]58

[2019]12

2019 4

" " " "

" " " "

23

" " " "

41

2 2018 10

29 6 " " 4 1

1 13 2018

				"		"			
	"	"							
2017	46						2017	88	
							"	"	
		2018	2019						
64			2018-2019			6			
		4		900					
			1			1		3	
5		2	1	4		3			
									"
"									
						15			
		44		9				1	
"	"		2019	"	" "			"	
				"	"				

2019

" "

5

" "

2019

5

2019

" "

4

3

" " " "

45

7000

2018

148

93

55

2020

110

' ' " "

	"	"	"			
	4		"	KAB	SIYB	"
						"
	"				60	
22	63		2018		"	+"
						()
	/	"	"			
	"	"				
					2018	6
	11990.25		28098		8003.85	
	1096 / /			32256728.18		
	9721.89		20 / /			95449.85
				"	"	
					OA	
			3D	3D		

"

"

27

5

"

"

"

"

"

"

90%

“ ”

26 18.31%

64 45.07%

47	33.10%	1	0.70%
----	--------	---	-------

“ ”

2.0

“ ”

2017

()

26

6

201 2019—2020

99.75%

1543	1527	98.96%	16	0.14%
------	------	--------	----	-------

"

"

2019

2018		96.90%		91.95%
	92.03%		93.80%	
88.47%		85.54%		85.39%
	87.97%		2017	

2018-2019

22	98.99%	2173	99.26%	2151
----	--------	------	--------	------

2018-2019
8.04%

173

2018-2019

166

2019	2173	2019	8	31	1595
73.41%				96.15%	
92.16%			84.47%		

2019	98.57%
2018	99.28%

2019	81.43%	72.34%
2018	71.41%	

"	57	"	"
"	"	"	"

“ “ “ “ “ “ “ “
“ “ “ “ “ “ “ “

7

1

24

8

22

“ “ “ “ “ “

“

“

— —

“ “

2.

3.

云南中医药大学本科教学质量报告支撑数据

—————
